

SRM 325

Tiffin University Golf Clubhouse

By: Lyndsey Colman and Hannah McMasters

12/5/2013

Table of Contents

Part I.....	3
1. Facility	3
2. Benefits	3
3. Needs	3
4. Maximum Usage	3
5. Location.....	4
6. Timeline.....	5
7. Perks.....	6
8. Environmentally Friendly	6
Part II.....	6
1. Estimated Budget.....	6
2. Expenses.....	7
3. Labor Costs.....	7
4. Material Costs	7
5. Proposal	7
6. Funding	8
7. Type of Planning.....	8
Part III.....	8
1. Media Accommodations	8
2. Technology.....	8
3. Parking	9
4. Locker rooms, Restrooms, Flooring, Etc.	9
5. Maintenance	9
6. Facilitation Manager	9
7. Safety	10
Part IV.....	10
1. Key Facility Designs	10
2. Blue Prints	10
Original Blue Prints.....	11
Ideal Blue Prints	13
Part V.....	15

Part I

1. Facility

This facility's purpose is to house the men and women's golf teams at Tiffin University. With the renovations to the current facility the benefactors and use of the facility for the current and future golf team members will increase significantly due to the items we are adding to the facility.

2. Benefits

The facility benefits the University because it houses the men and women's golf teams. This is a specific facility specialized just for the advancement of current players as well as a recruitment tool for the coaching staff who are wanting to gain higher level athletes to the school and golf program in the future.

3. Needs

I believe that with the new renovations being done to this facility the current and future needs have exceeded what the players and coaches were thinking of when starting the renovations. We have added so many cool features to the inside of the facility not only for increasing each players golf game but also the essentials that student-athletes would like to utilize as well. Every athlete wants a place where they can lounge around and relax. We have incorporated inside one facility a space to practice, lift, do homework, relax, and even a game area. For a student-athlete these are all of the essentials in one facility. And the best part is the facility is specialized for just the golf team.

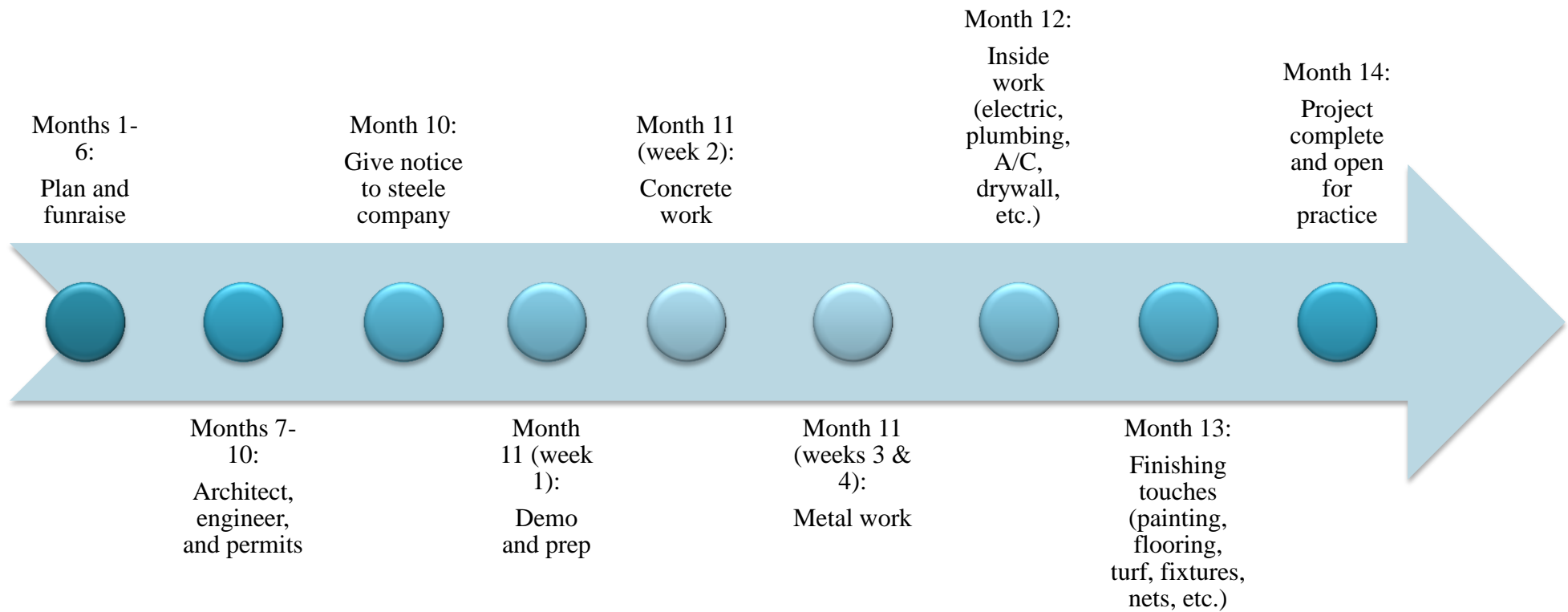
4. Maximum Usage

We only had so much space to work with since the building could only be expanded in two directions instead of all four due to the railroad and a service road on the other side of the building. So with the usage of only being able to expand in two directions I believe that the facility is being used to its maximum usage. Every room is something different that will help the golf team in one way or another; from the putting green all the way down to the wash room. Every square foot of the facility is being used.

5. Location

I do not believe that the location of the facility is inconvenient to get to. It is not attached to but located behind the campuses major recreation facility which I think is a benefit compared to some other places it could be located on campus. And it is not alone back there, the wrestling teams facility is also located back there so it is not like it is secluded. There are plenty of parking for the coaches and players. The only down fall to the location would be that there is only one exit from the parking lot. There are multiple exits in the facility itself in case of emergency but when it comes to the parking lot if wrestling was having an event and the Heminger was having an event the parking lot exit may be a little congested.

6. Timeline



7. Perks

The perks for this facility is that it is specific to the golf team. So when we decided to renovate it, everything that is being added to this facility is for the golf team including the needs and wants of both the players and coaching staff. This is great for them because they can almost customize their facility to suit them. We are adding a larger weight room so that they can utilize that space more instead of using the Hanson Building. We are adding a wash room with a washer and dryer including shelving units for the players to place their clothes until transferred into their lockers. More storage will be added to the facility. And lastly a putting green will be added to the addition to the building with a sand pit and even a tree to make the practice facility more realistic. And those are only some of the additions we are placing into the new facility.

8. Environmentally Friendly

Our facility is and is not environmentally friendly. It all depends on how you look at it. We are environmentally friendly in the way that our facility is not distributing any harmful waste into the air. But the facility is not environmentally friendly in the case that we do not have solar panels on the roof to reduce the amount of electricity used yearly. This is because Ohio does not produce enough sun light all year around for solar panels to be beneficial in decreasing the electricity usage in a facility.

Part II

1. Estimated Budget

The estimated budget for this project is around \$305,300. That includes everything including furniture, computers, labor, materials, etc. This is also a high estimate if there are any challenges faced. We will also try to save on materials that we can reuse that are not calculated in the budget.

2. Expenses

Building	Expenses	Other	Expenses
Slab work	\$ 30,000.00	Sand	\$ 500.00
A/C	\$ 15,000.00	Turf	\$ 30,000.00
Electric	\$ 10,000.00	TrackMan	\$ 60,000.00
Metal	\$ 61,000.00	Furniture	\$ 1,500.00
Plumbing	\$ 5,000.00	Added electronics	\$ 2,500.00
Black top	\$ 5,000.00	Weight room equipment	\$ 5,000.00
Engineer	\$ 5,000.00	Washer and Dryer	\$ 700.00
Architect	\$ 5,000.00	Misc.	\$ 5,000.00
Doors	\$ 1,600.00	TOTAL	\$ 105,200.00
Windows	\$ 3,000.00		
Framer	\$ 3,000.00		
Drywall	\$ 5,500.00		
Flooring	\$ 7,000.00	PROJECT TOTAL	\$ 305,300.00
Garage door	\$ 600.00		
TOTAL materials and labor	\$ 156,700.00		
Fees=5%	\$ 7,900.00		
Extras and Overages=10%	\$ 16,500.00		
General Contractor=10%	\$ 19,000.00		
TOTAL	\$ 200,100.00		

3. Labor Costs

Labor costs are included in the prices of the metal work and all other aspects of labor intensive work.

4. Material Costs

Material costs are also included in the prices of any expense that needs materials.

5. Proposal

Because we are expanding the building we do need to have the city of Tiffin come out and make sure that we are in requirements to the zoning rules and regulations. But we do not need to write any kind of written proposal when it comes to the funding of the building since the institution owns the property.

6. Funding

Since this facility is only used by the golf teams and coaching staff. They will be the ones having to fundraise most of the funds for this renovation. Of course there are several different ways to fundraise, such as the current golf outing that the University does every year already. Then the coaching staff can reach out to alumni of the program for donations. And lastly, the coach staff can take it to the athletic department to help pay for some of the costs. The team could also get donations from local businesses but I do not see that being very beneficial due to the fact that this facility is not open to the public.

7. Type of Planning

The type of planning that will be used will be a combination of space management, move management, and swing management. Since this is an existing facility that is being renovated the area of the building being renovated needs to be cleared out. That is when move and swing management come into play. Things need to be moved around so that they are out of the way of the construction but also so the coaching staff can still utilize the building. When using the space management that includes the entire renovation process from beginning to end. Since the golf season is in the fall. We would begin the whole process in the spring semester with making the blue prints hiring the architect and ordering all of the parts for the putting green and weight room. Then once the school year ends in May the building will begin and that process will take an estimated period of three months. The facility will be done and ready to use in the fall when the season starts back up again.

Part III

1. Media Accommodations

Because this is a practice facility there is no need for a press box or any other media usage in the facility.

2. Technology

In the design, we will be adding four desktop computers and a printer for study table hours. There will also be a new system for one of the hitting bays. The TrackMan simulator will cost about \$60,000. This will include:

TRACKMAN PRO IIIIE INDOOR/OUTDOOR

TPS TRAINING SOFTWARE WITH VIDEO

E6 SIMULATOR COURSES

QUADCORE 4+ GHZ PC

2 HIGH SPEED CAMERAS

25"+ TOUCHSCREEN MONITOR

4000+ LUMEN HD PROJECTOR

CUSTOM SIMULATOR ENCLOSURE

HQ IMPACT/VIEWING SCREEN

PREMIUM HITTING TURF

<http://trackmangolf.com/trackman-simulator>

3. Parking

Parking is already around the facility. There will only be about twelve spots less than the original blue print.

4. Locker rooms, Restrooms, Flooring, Etc.

The locker room and lockers already exist and will be incorporated in the blue prints. The bathrooms will also be kept the same. The flooring will all be replaced. The weight room will have the thick comfort puzzle mats. The locker room, offices, study area, and hallways will be a carpet tile. The bathrooms will be vinyl. The hitting bays and greens will all be turf. The garage and both storage rooms will be the concrete slabs.

5. Maintenance

There will not be much need for upkeep from the current to the new facility. The only thing that we are bringing in is the putting green which may need the occasional vacuuming because of the sand pit. But other than they the weight room will not require any more maintenance then it did before with putting the weights back in the proper spots and sanitizing them.

6. Facilitation Manager

The coaching staff of the men and women's golf teams would be the facility managers because their offices are in the facility and it is specific to the golf team.

7. Safety

Every team has their own safety concerns when it comes to utilizing the facility. The first concern would be that the weight room is being utilized properly by the players and coaches. Want to make sure that you are lifting with a partner who can help you when needed and if you are lifting alone to make sure you are not doing more weight than you can handle. Another safety concern will have to be with the putting green and hitting stations. When it comes to swinging a club everyone in that room should remain cautious. The swingers need to make sure that when they swing there is no one within a 6 foot radius and the other players who are in the room need to make sure that they are at least 6 feet away from the person swinging.

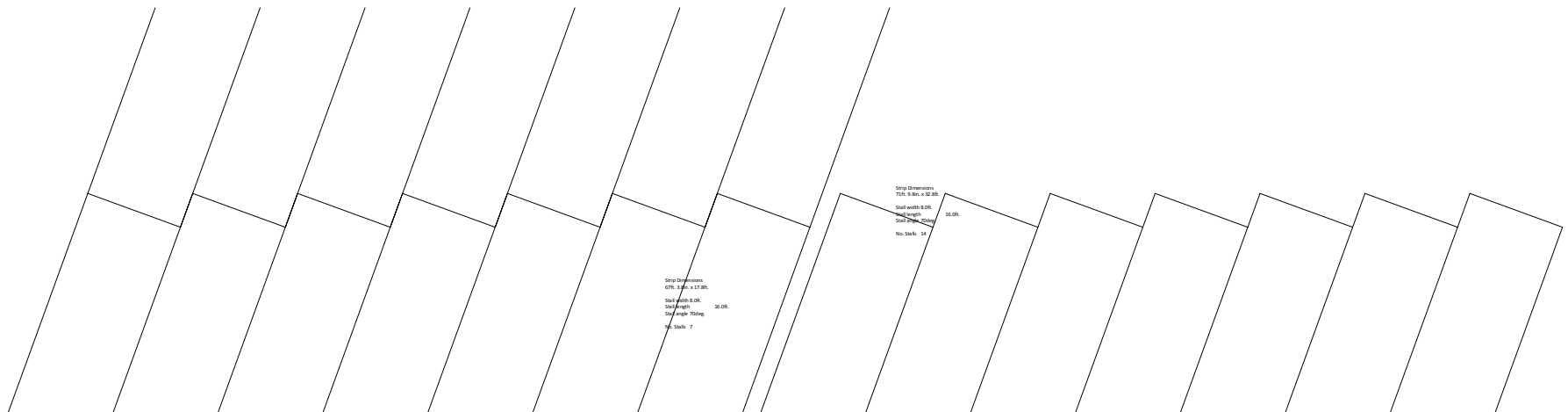
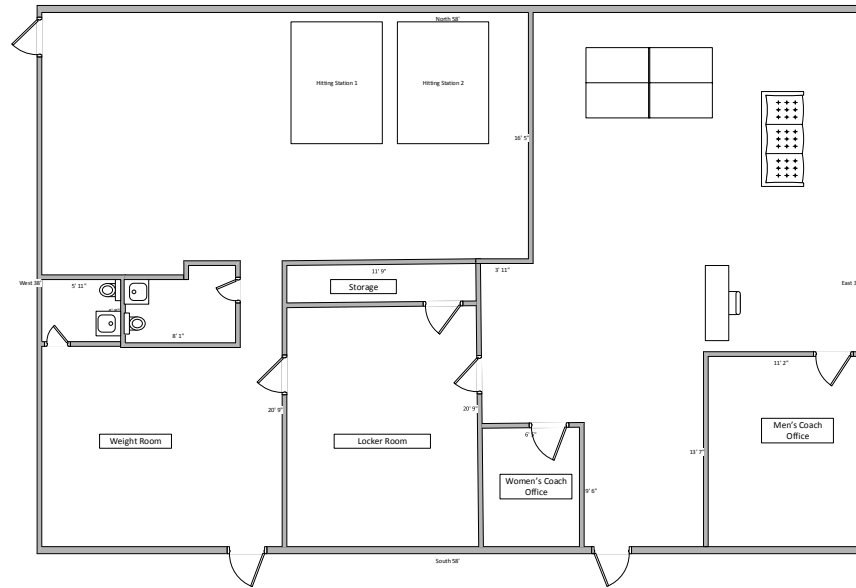
Part IV

1. Key Facility Designs

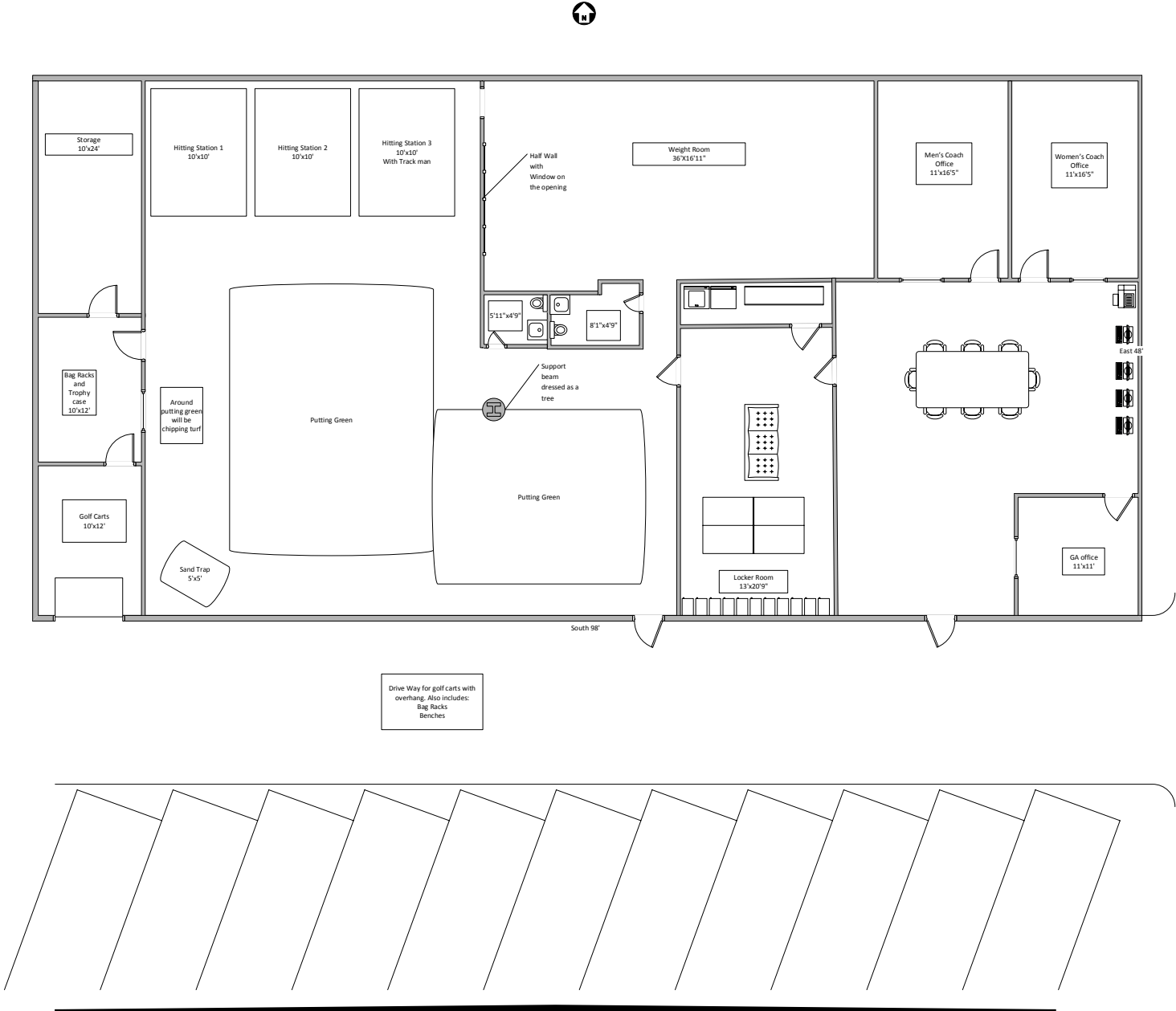
Some of the designs include new offices for the men's head coach, women's head coach, and the graduate assistant. Also included is an area for study tables and a lounge in the locker room. There will also be plenty of storage and a garage for a golf cart. Majority of what will be added is the turf room. It will include three hitting bays in which one will have the TrackMan system. There will be a small sand trap that will incorporate most aspects of many different kinds of sand traps. There will be a putting green that will take up majority of the turf room. There will be different locations that will have different breaks to read while also having a section that is completely flat for practice. There will also be a challenge of going around a tree. Around the green and in the remainder of the turf room will be chipping turf to practice.

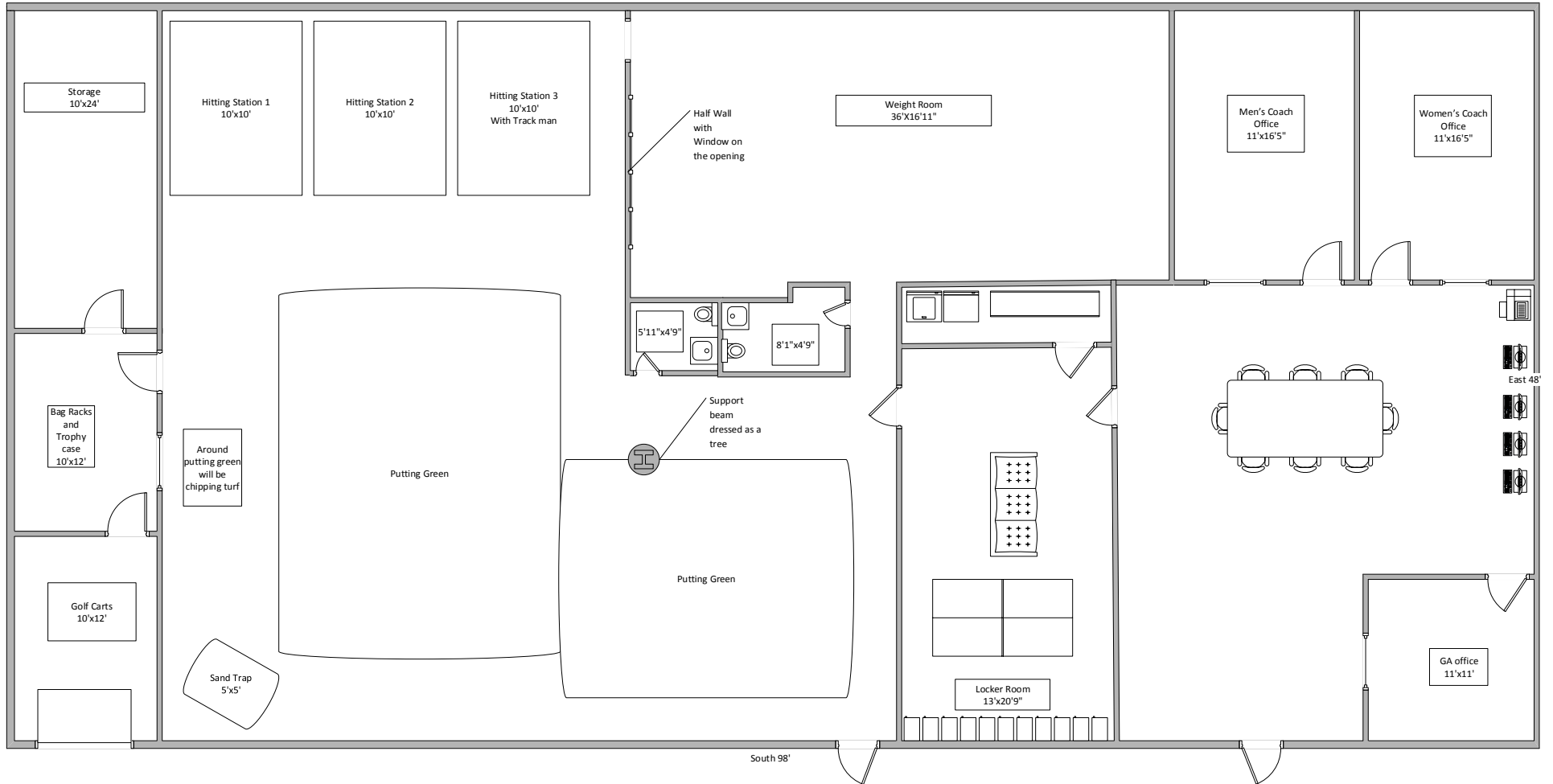
2. Blue Prints

Original Blue Prints









Part V

With the renovations to this current facility we have increased the practice facility for the men and women's golf teams. These additions to this facility will allow current players to succeed on a higher level. These additions also help the coaching staff in recruiting players who play at a higher level to increase the success of the program in the future. This renovation of the hitting rooms and putting green will also allow the player to practice more during the winter and throughout the season when the weather is not permitting to be out on the golf course.